



# Certificate of Analysis

**Sample:KN20428017-003**
**Harvest/Lot ID: 1**
**Batch#: 422CBDNGM**
**Seed to Sale# N/A**
**Batch Date: 04/22/22**
**Sample Size Received: 45 gram**
**Total Weight/Volume: N/A**
**Retail Product Size: 4 gram**
**ordered : 04/25/22**
**sampled : 04/25/22**
**Completed: 05/09/22**
**Sampling Method: SOP Client Method**

May 09, 2022 | SPECTRUM RELIEF

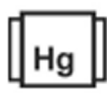
 2937 E Sands Dr,  
 Phoenix, AZ, 85050

**PASSED**

Page 1 of 1

**PRODUCT IMAGE**

**SAFETY RESULTS**

**Pesticides**  
 NOT TESTED

**Heavy Metals**  
 NOT TESTED

**Microbials**  
 NOT TESTED

**Mycotoxins**  
 NOT TESTED

**Residuals Solvents**  
 NOT TESTED

**Fith**  
 NOT TESTED

**Water Activity**  
 NOT TESTED

**Moisture**  
 NOT TESTED

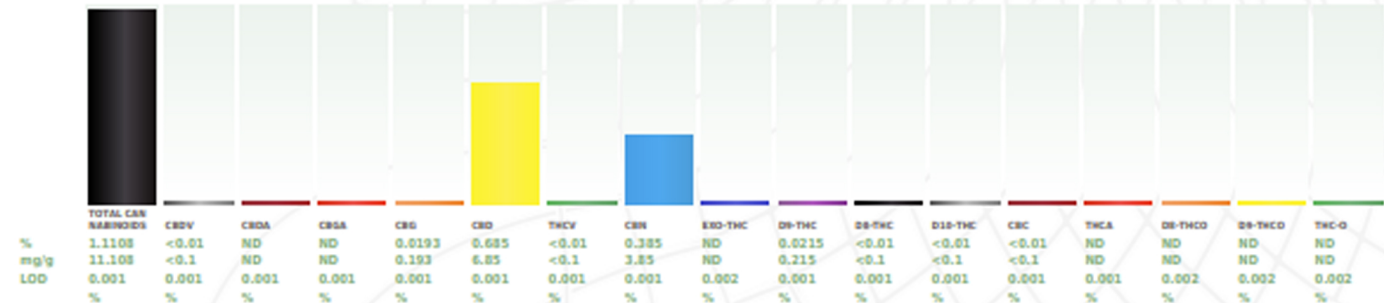
**Terpenes**  
 NOT TESTED

**MISC.**

**Cannabinoid**
**PASSED**

**CBN**  
**0.385%**  
 CBN/Gummy : 15.4 mg

**Total CBD**  
**0.685%**  
 Total CBD/Gummy : 27.4 mg

**Total Cannabinoids**  
**1.1108%**  
 Total Cannabinoids/Gummy : 44.432 mg


**Analyzed by:** 2368, 113  
**Weight:** 0.2313g  
**Extraction date:** 04/29/22 14:08:37  
**Extracted By:** 113  
**Analysis Method:** -Expanded Measurement of Uncertainty: Flower Matrix d9-THC:12.7%, THCa: 9.5%, TOTAL THC 11.1%. These uncertainties represent an expanded uncertainty expressed at approximately the 95% confidence level using a coverage factor k=2 for a normal distribution.  
**Reviewed On:** - 05/02/22 13:12:52  
**Batch Date:** 04/28/22 14:08:27  
**Analytical Batch:** -KN002341POT  
**Instrument Used:** HPLC E-SH1-008  
**Running On:** 04/29/22 14:36:37  
**Dilution:** 40  
**Reagent:** 081321.R04; 050222.R01; 042122.R02  
**Consumables:** 94789291.271; 200331059  
 Full spectrum cannabinoid analysis utilizing High Performance Liquid Chromatography with UV/PDA detection (HPLC-UV/PDA). (Method: SOP.T.30.031.TN for sample prep and Shimadzu High Sensitivity Method SOP.T.40.020 for analysis). \*Based on FL action limits.

This report shall not be reproduced, unless in its entirety, without written approval from Kaycha Labs. This report is a Kaycha Labs certification. The results relate only to the material or product analyzed. Test results are confidential unless explicitly waived otherwise. Void after 1 year from test and date. Cannabinoid content of batch material may vary depending on sampling error. IC=In-control QC parameter, NC=Non-controlled QC parameter, ND=Not Detected, NA=Not Analyzed, ppm=Parts Per Million, ppb=Parts Per Billion. Limit of Detection (LoD) and Limit of Quantitation (LoQ) are terms used to describe the smallest concentration that can be reliably measured by an analytical procedure. RPD=Reproducibility of two measurements. Action Levels are State determined thresholds for human safety for consumption and/or inhalation. The result >99% are variable based on uncertainty of measurement (UM) for the analyte. The UM error is available from the lab upon request. The "Decision Rule" for the pass/fail does not include the UM. The limits are based on F.S. Rule 64-4.310.

**Sue Ferguson**

Lab Director

 State License # n/a  
 ISO Accreditation # 17025:2017

Signature

05/09/22

Signed On